

# Vantex<sup>®</sup> 60 CS

insect control

A unique microcapsule formulation gives it an excellent safety profile and ensures the widest range of tank mix compatibility.

## VANTEX<sup>®</sup> 60 CS INSECT CONTROL AT A GLANCE

Registration No.	L7227, Act No 36 of 1947
Active ingredient	Gamma-cyhalothrin (pyrethroid) 60 g/l
IRAC Group	3A
Mode of Action	A capsule suspension contact and stomach insecticide for agricultural use in crops as indicated.

## HOW DOES VANTEX<sup>®</sup> 60 CS INSECT CONTROL WORK?

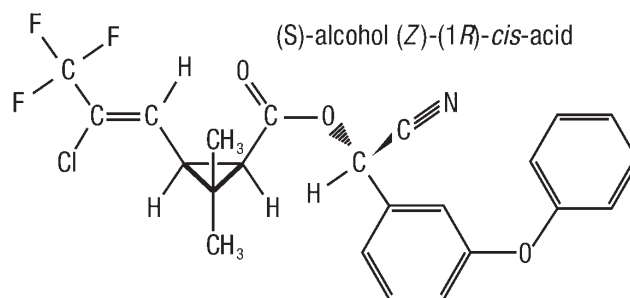
Gamma-cyhalothrin, the active ingredient in **VANTEX<sup>®</sup> 60 CS** insect control, is a single stereoisomer alpha-cyano pyrethroid that is regarded as the **most potent pyrethroid insecticide available in the world**.

Gamma-cyhalothrin is a single stereoisomer of the pyrethroid insecticide cyhalothrin, and as such shares physical, chemical, and biological properties with both cyhalothrin and lambda-cyhalothrin, which are mixtures of 4 and 2 isomers respectively.

Gamma-cyhalothrin is the most insecticidally active isomer of cyhalothrin/lambda-cyhalothrin, and thus the technical gamma-cyhalothrin product may be considered a refined form of cyhalothrin/lambda-cyhalothrin in that it has been purified by removal of less active and inactive isomers. Thus, similar levels of insecticidal efficacy for gamma-cyhalothrin can be obtained with significantly reduced application rates as compared with either cyhalothrin or lambda-cyhalothrin.

## THE ACTIVE INGREDIENT AND CHEMICAL STRUCTURE

Active Ingredient	Gamma-cyhalothrin, a single stereoisomer alpha-cyano pyrethroid. The most potent pyrethroid insecticide available in the world.
Chemical Formula	C <sub>23</sub> H <sub>19</sub> ClF <sub>3</sub> NO <sub>3</sub>
IUPAC Name	(S)- -cyano-3-phenoxybenzyl (1R)-3-[(Z)-2-chloro-3,3,3-trifluoropropenyl]-2,2-dimethylcyclopropanecarboxylate

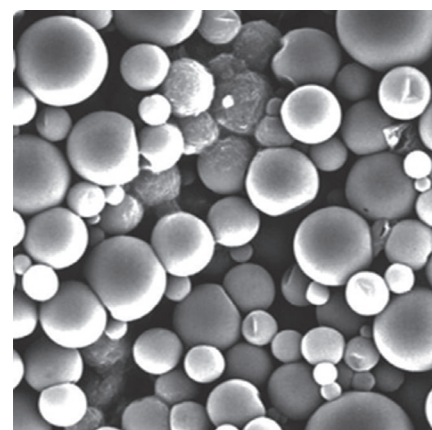


## FORMULATION

**VANTEX<sup>®</sup> 60 CS** insect control offers both fast knockdown and extended control of insect pests. Initial control of established pest populations occurs primarily through direct contact of the insect pests with collapsing microcapsules. The larger capsules remain intact, gradually releasing the gamma-cyhalothrin over time giving long lasting control. **VANTEX<sup>®</sup> 60 CS** insect control is produced using microcapsule suspension formulation technology giving consistent high performance, offering excellent rain-fastness, **temperature tolerance**, increased residual activity, very low dose rates, low volatility and non-flammability improving the ease of handling, use and transportation.

## IMPROVED USER SAFETY

As a highly potent product, the microcapsule provides controlled release of the active ingredient offering reduced toxicity to operators and significantly **reduced risk of pyrethroid paraesthesia (itching and burning of skin)** that is an unpleasant side effect of many other pyrethroid insecticides.



Electron Micrograph of the **VANTEX<sup>®</sup> 60 CS** microcapsule.

**USE PLANT PROTECTION PRODUCTS SAFELY AND WITH RESPONSIBLE CARE.  
PLEASE ALWAYS FOLLOW THE LABEL WHEN APPLYING PLANT PROTECTION PRODUCTS.**

# Vantex<sup>®</sup> 60 CS

insect control

## FEATURES AND BENEFITS

FEATURES	BENEFITS
Good safety profile	<ul style="list-style-type: none"> <li>• <b>Significantly reduced risk of paraesthesia (itching and burning of skin)</b></li> <li>• Lower mammalian toxicity</li> <li>• Blue band label</li> <li>• Reduced operator exposure to the active ingredient</li> </ul>
Low Dose Rate	<ul style="list-style-type: none"> <li>• <b>Most potent pyrethroid insecticide available in the world</b></li> <li>• Easy and safer to use</li> <li>• Reduced cost of transport and storage</li> </ul>
Low Crop Damage	<ul style="list-style-type: none"> <li>• Low solvent load in formulation</li> <li>• No added crop burn</li> </ul>
Broad Spectrum Control	<ul style="list-style-type: none"> <li>• Excellent control of establishment pests</li> <li>• The only pyrethroid needed on farm</li> </ul>
Excellent Tank Mix Compatibility	<ul style="list-style-type: none"> <li>• Excellent tank mix compatibility with herbicides, fungicides, trace elements and UAN* fertilizers</li> </ul>
Advanced Microcapsule Formulation	<ul style="list-style-type: none"> <li>• <b>Better product stability under extreme environmental conditions, therefore, not as sensitive to variable temperatures compared to other pyrethroids</b></li> <li>• 30 minute rainfastness, the shortest in the market</li> <li>• Controlled release leading to extended residual control</li> </ul>

\*UAN - urea and ammonium nitrate fertilizers

## USE RECOMMENDATION

### ALL CROPS

PEST	DOSAGE	REMARKS
Cutworm ( <i>Agrotis spp.</i> )	0,1 ml/100 m row 30 ml/ha 30 ml/ha	Soil must be well-prepared - free of clods and excessive plant debris. Apply pre- or post-emergence. Apply ONLY if the top 3 cm of soil is moist. Where high cutworm populations is expected (minimum tillage), monitor infestations for follow-up applications.  <b>PREVENTIVE APPLICATION (PRE-EMERGENCE):</b> <b>Ground application:</b> Row treatment: Apply in at least 3 ℓ water/100 m in a 30 cm wide band over row. <b>Overall application:</b> Apply in 300 ℓ water/ha. <b>Aerial application:</b> Apply in 30 ℓ water/ha.
	0,1 ml/100 m 30 ml/ha 30 ml/ha	<b>CORRECTIVE APPLICATION (POST-EMERGENCE):</b> <b>Ground application:</b> Row treatment: Apply in at least 3 ℓ water/100 m in a 30 cm wide band over the row. <b>Overall application:</b> Apply in 300 ℓ water/ha. <b>Aerial application:</b> Apply in 30 ℓ water/ha.

### MAIZE

PEST	DOSAGE	REMARKS
African bollworm ( <i>Helicoverpa armigera</i> )	42 ml/ha	<b>Ground application:</b> Apply in 250 - 500 ℓ water/ha depending on plant size. Scout fields at 7 day intervals from time of flowering and start spraying when infestation is noticed. Larvae should not be larger than 1 cm in length. Scout every 3 days after rain and spray if necessary.
Pink stalkborer ( <i>Sesamia calamistis</i> )	0,4 ml/100 m row	<b>Ground application:</b> Apply directly into funnel. Start spraying 2 weeks after planting and repeat at 10 - 14 day intervals until the ears appear. Use in not less than 3 ℓ water / 100 m row.
Maize stalkborer ( <i>Busseola fusca</i> ) (First and second generation) Chilo stalkborer ( <i>Chilo partellus</i> )	0,5 ml/100 m row OR 50 ml/ha 50 ml/ha	Treat before larvae enter stalks. Apply up to the stage when tassels are enclosed by the flag leaf. <b>Ground application:</b> The first application must be made when 10 % of the plants show shothole damage. Apply in 3 ℓ water/100 m row. The spray must be directed into the funnel. <b>Aerial application:</b> Apply in 30 ℓ water/ha as an early corrective application when 10 % of the plants show shot hole damage.  When larvae are longer than 10 mm or a re-infestation occurs a second application may be necessary within 10 - 12 days after the first application.

## FOR MORE INFORMATION

Put this powerful tool to work for you. Contact your local crop protection retailer, or FMC representative to learn how you can get more consistent control with **VANTEX<sup>®</sup> 60 CS** insect control.

For more information please contact:

FMC Chemicals (Pty) Ltd  
PO Box 44, Postnet Menlyn, Waterkloof Glen, 0181  
Republic of South Africa. Tel: +27 12 003 2938.

Always read and follow the label directions and precautions for use. VANTEX<sup>®</sup> 60 CS contains Gamma-cyhalothrin (pyrethroid) Reg. No. L7227, Act No. 36 of 1947, caution. Vantex<sup>®</sup> is the trademark of FMC Corporation or an affiliate.