

## VANTACOR™ INSECT CONTROL

Vantacor™ insect control is a high concentration, low use rate formulation of the active ingredient Rynaxypyr®. This is the same active found in Prevathon® insect control, which has set the standard today in controlling Lepidopteran pests in many different crops. The industry-leading Lepidopteran activity of Rynaxypyr active is a Group 28 mode of action insecticide that effectively impairs muscle regulation preventing insect mating, mobility and feeding.

### PRODUCT INFORMATION

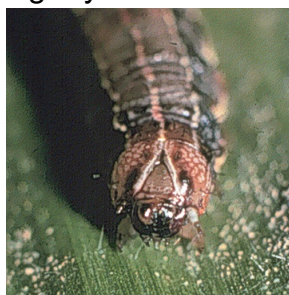
<b>MOA</b>	Group 28
<b>Active Ingredient</b>	Chlorantraniliprole (Rynaxypyr)
<b>Formulation</b>	Suspension Concentrate
<b>Loading</b>	5.0 lbs. active ingredient per gallon
<b>Signal Word</b>	None
<b>Low Use Rates for Fall Armyworm</b>	1.2 – 2.5 fl. oz./A
<b>Package Size</b>	8 x 1 qt. 2 x 2.5 gal.
<b>REI</b>	4 hours
<b>Applications</b>	Ground, air, and overhead chemigation

## FALL ARMYWORM in WINTER WHEAT

The fall armyworm, *Spodoptera frugiperda*, is an important and destructive pest to winter wheat. Fall armyworms can kill seedling wheat, so newly planted wheat fields need to be watched carefully for several weeks after wheat emergence.

### IDENTIFICATION

Larvae of fall armyworms vary from light tan to nearly black with a distinct white line between the eyes that forms an inverted “Y” pattern on the face. Another identifying characteristic are three thin light-yellow lines that run from head to tail of the larvae.



September 2021

### Inside this issue



**Control of Fall Armyworm in Winter Wheat in OK, KS, and TX**

**VANTACOR INSECT CONTROL**

**Contact your local FMC representative**

**Cori Woelk**  
Western KS  
405-370-7469

**Gary Vaupel**  
Central KS  
785-826-0098

**Matt Ehrhart**  
East Central KS  
785-826-0493

**Kevin Lee**  
SE KS, SW MO  
785-424-5564

**Greg Justice**  
OK, NE TX  
405-747-0475

**Cameron McAnally**  
OK Panhandle, NW TX  
806-662-2065

**Technical Service Manager**  
**V. Bruce Steward, Ph.D.**  
Choctaw, OK  
913-339-8586

## DAMAGE

At first, fall armyworms are very small – 1/8 inch long – and cause little plant damage. An early sign of fall armyworms is “window-pane” feeding, where the green tissue has been scraped off, leaving a clear membrane.

Larvae feed for 2-3 weeks, and full-grown larvae are about 1 to 1-1/2 inches long and may eat small plants to the ground, causing a severe stand loss in just a couple of days. Given their immense appetite, great numbers and marching ability, fall armyworms can damage entire wheat fields in a few days.

## MONITORING

Look for evidence of window-paned leaves or chewed leaves along the wheat field margin as well as in the field interior because they often move in from road ditches and weedy areas. Fall armyworms are most active in the morning or late afternoon. The suggested treatment threshold is two to three larvae per linear foot of row in winter wheat.

## RECOMMENDATIONS

- Ensure two or more wheat leaves are present at time of application.
- Rate range is 1.2-2.5 fl. oz./A and typical application rate range is 1.2-1.7 fl. oz./A.
- Use at least 2 GPA when applied by air and 10 GPA or more when applied by ground.
- Use of surfactants can help product adhere to the upright and erect wheat leaves.
- Target applications to smaller caterpillars since they are easier to control than larger ones.



## Benefits of Vantacor™ Insect Control for Fall Armyworms

**NEW VANTACOR™ INSECT CONTROL** powered by Rynaxypyr® active delivers the industry standard active ingredient for long residual control of fall armyworms. This highly concentrated formulation of Rynaxypyr active uses a low use rate to target this important and destructive pest in wheat. No flaring of aphids and minimal impact on many important beneficial insects.

This pest management tool offers the benefits of Prevathon® insect control that growers love but now in a new, low use rate formulation applied at 1.2 - 2.5 fl. oz./A for fall armyworms. This formulation also has improved mixing and less packaging so growers can spend less time handling and hauling jugs, shuttles and pumps to and from the field.

