

SPRING WHEAT MANAGEMENT

Farm management in the spring is a busy juggling act between spring wheat applications and preparing ground for the upcoming planting season. FMC's wheat portfolio provides application flexibility to minimize passes across the field while managing the most common weed, disease and insect pests occurring during the spring greenup period..

DISEASE MANAGEMENT OPTIONS

Product: Topguard® fungicide
Use Rates: 5 – 7 fl. oz./A via 2(ee) recommendation¹ for early season disease protection in spring and winter wheat.
Application Timing: Feekes 3-7
Labeled Diseases: Common and stripe rust, powdery mildew, Septoria leaf and glume blotch
PHI: 30 days for grain, 15 days for hay, 0 days for forage
Strengths: - most systemic triazole fungicide (foliar and root uptake)
 - long lasting active ingredient helps protect foliage until flowering fungicide application timing to help maximize yield



\$1.00/A @ 5 fl. oz. use rate
 \$1.40/A @ 7 fl. oz. use rate



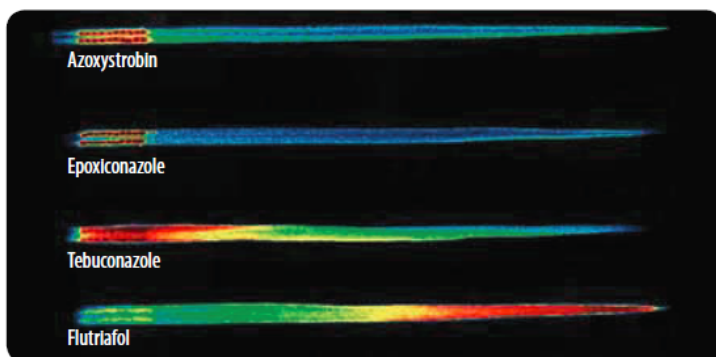
Product: Topguard® EQ fungicide
Use Rates: 3 – 4 fl. oz./A via 2(ee) recommendation¹ for early season disease protection in spring and winter wheat.
Application Timing: Feekes 3-7
Labeled Diseases: Common and stripe rust, powdery mildew, Septoria leaf and glume blotch **plus tan spot**
PHI: 30 days for grain, 15 days for hay, 7 days for forage
Strengths: - same benefits and flutriafol active as Topguard fungicide
 - premix provides enhanced rust residual **plus improved straw strength and quality**
 - broad crop label for inventory management



\$0.60/A @ 3 fl. oz. use rate
 \$0.80/A @ 4 fl. oz. use rate



Fungicide Systemicity in Wheat – 3 days after application to base of wheat leaf. Red indicates concentration of fungicide in the leaf. Flutriafol, the active in Topguard fungicide brands, systemically protects your crop from early season pathogens.



(Courtesy of DW Bartlett, Syngenta - Jeallot's Hill International Research Centre)

Inside this issue

January 2021

Spring Wheat Management

Diseases



Weeds



Insects



Contact your local representative

Northeast FMC Contacts

Chris Leon
 NE Technical Services
 601-927-9410
Chris.Leon@fmc.com

Gale Drake
 585-447-7305
Gale.Drake@fmc.com

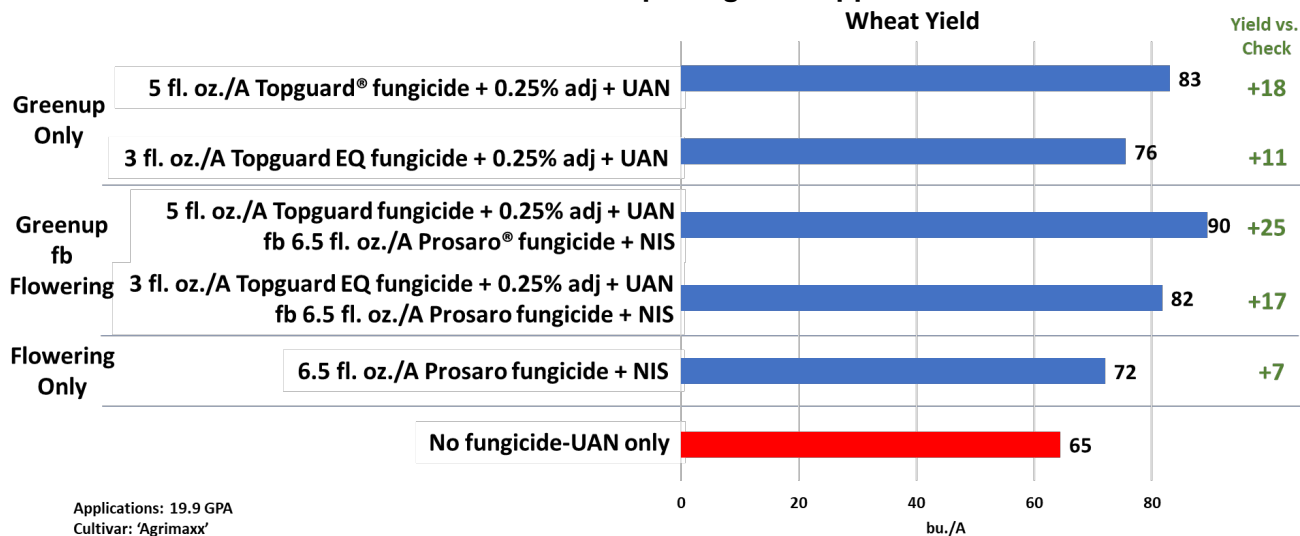
Karen Hartman
 410-202-6848
Karen.Hartman@fmc.com

Michael Myers
 717-304-8957
Michael.Myers@fmc.com

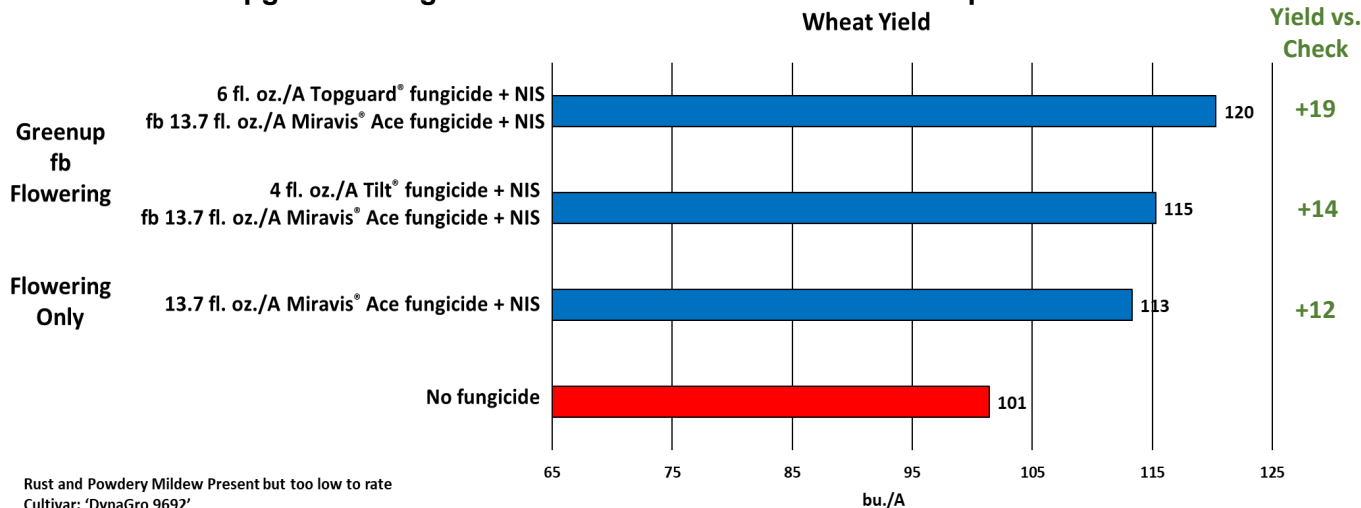
Michael Cunnane
 901-201-1657
Michael.Cunnane@fmc.com

Michael Jordan
 843-309-0732
Mike.Jordan@fmc.com

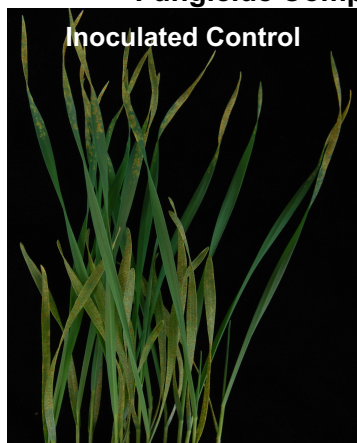
Benefits of the Greenup Fungicide Application



Choose Topguard® Fungicide for the Yield Benefits Versus Propiconazole Brands



Fungicide Comparison for Wheat Leaf Rust Management via Root Uptake



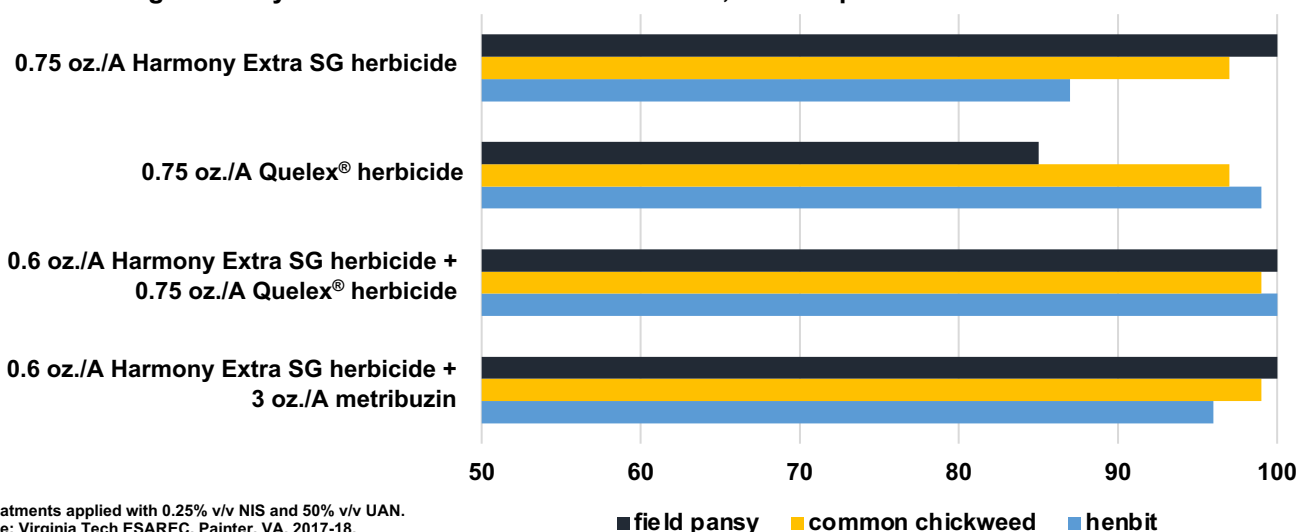
WEED MANAGEMENT OPTIONS

Product: Harmony® Extra SG herbicide with TotalSol® soluble granules
Use Rates: 0.6 – 0.75 oz./A
Application Timing: 2-leaf until prior to visible flag leaf
Labeled Weeds: 65+ weeds including keys species such as wild garlic & chickweed, as well as field pansy via 2(ee) recommendation
PHI: 45 days for grain, 30 days for hay, 7 days for grazing & forage
Strengths:
 - broadleaf and garlic weed control standard
 - flexibility for crop rotation to soybean, field corn, cotton & grain sorghum



\$0.40/A @ 0.60 oz. use rate
 \$0.50/A @ 0.75 oz. use rate

Tank Mixing Harmony Extra SG Herbicide for Consistent, Broad Spectrum Broadleaf Weed Control



Defining Common Harmony Extra SG Herbicide Tank Mix Combinations

Spring Greenup Herbicide Options	Herbicide Program	Strengths
	0.75 oz./A Harmony Extra SG herbicide + NIS	<ul style="list-style-type: none"> wild garlic, field pansy via 2(ee) recommendation, ALS-susceptible weed sites
	0.6 – 0.75 oz./A Harmony Extra SG herbicide + 0.4 pt./A Starane® Ultra herbicide + NIS	<ul style="list-style-type: none"> weeds above plus speedwell, henbit, chickweed including ALS resistant species
	0.6 – 0.75 oz./A Harmony Extra SG herbicide + 0.75 oz./A Quelex herbicide + NIS	<ul style="list-style-type: none"> same weed spectrum as metribuzin above very good crop safety in trials

INSECT MANAGEMENT OPTIONS

Product:	Mustang® Maxx insecticide
Use Rates:	2.8 – 4.0 fl. oz./A (see label for pest and rate recommendation)
Application Timing:	Planting until 14 days prior to harvest
Labeled Insects:	Armyworms, cereal leaf beetle, flea beetle, aphids, chinch bugs, sawfly
PHI:	14 days for grain, hay & forage
Strengths:	- excellent on key early season pests - quick knockdown



¹Topguard fungicide 2(ee) and Topguard EQ fungicide 2(ee) are recommended for early season disease protection in spring and winter wheat via a 2(ee) recommendation in Alabama, Arkansas, Connecticut, Delaware, Kentucky, Illinois, Indiana, Louisiana, Maine, Maryland, Michigan, Minnesota, Mississippi, Montana, New Hampshire, New Jersey, New York, North Carolina, North Dakota, Ohio, Pennsylvania, Rhode Island, South Carolina, South Dakota, Tennessee, Vermont, Virginia, and West Virginia.

AG.FMC.COM

Mustang Maxx insecticide is a Restricted Use Pesticide. Always read and follow all label directions, precautions and restrictions for use. Some products may not be registered for use in all states of the United States. Please contact your FMC representative for information regarding current state registrations. FMC, the FMC logo, Harmony, Mustang, Topguard, and TotalSol are trademarks of FMC Corporation or an affiliate. Trademarks of DuPont, Dow AgroSciences or Pioneer and their affiliated companies or their respective owners. Prosaro is a trademark of Bayer. Miravis and Tilt are trademarks of a Syngenta Group Company. ©2021 FMC Corporation. All rights reserved. 1/21

HT-CTL-NE-Wheat Spring Greenup_01262021