

Lucento® Fungicide



SUGAR BEETS - CERCOSPORA MICHIGAN & NORTHERN PLAINS

Best-in-class protection on key sugar beet diseases while preserving yield potential.

Powered by a novel premix of active ingredients from FMC, new Lucento® fungicide provides an exclusive combination of benefits for smart disease protection and high yielding performance against the toughest diseases in sugar beets. Under heavy pressure, field studies demonstrated that Lucento fungicide provided excellent control of cercospora leaf spot. Lucento fungicide should always be used in combination with another broad-spectrum fungicide as part of a resistance management plan.

QUICK FACTS

- Only premix of a proven SDHI, bixafen, and FMC-patented flutriafol active ingredients.
- Highly systemic fungicide with preventative control of cercospora leaf spot and powdery mildew.
- Both acropetal and translaminar movement improve coverage and disease control.
- Dual modes of action reduce risk of resistance.



Application Guidelines

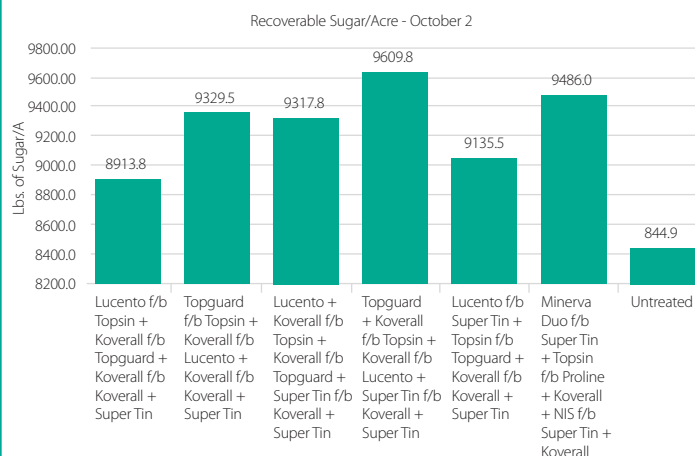
- Maximum rate: 5.5 fl. oz./A
- Retreatment interval: 21 days
- Method: Ground, air, chemigation
- Preharvest interval (PHI): 21 days
- Maximum applications: Two per crop year
- Restricted entry interval (REI): 12 hours

Product Information

Active ingredients: Bixafen (succinate dehydrogenase inhibitors, FRAC Group 7), flutriafol (demethylation inhibitors, FRAC Group 3)

Lucento® & Topguard® fungicides: CLS Treatments – Recoverable Sugar/A

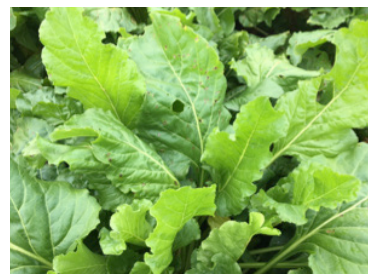
KayJay Ag Services, Inc. Horace, ND 2018.



Application Program

- Lucento fungicide rate @ 5.5 oz./A
- Topguard fungicide rate @ 14.0 oz./A
- Koverall® fungicide rate @ 2.0 lbs./A
- Topsin® fungicide 4.5SL @ 10 fl. oz./A
- Super Tin® fungicide 4L @ 8 fl. oz./A
- Minerva™ Duo fungicide @ 16 oz./A
- Proline® fungicide rate @ 5.0 fl. oz./A

Disease	Application
Cercospora Leaf Spot	Apply Lucento fungicide tank mixed with another broad-spectrum fungicide when disease is detected in the region or conditions are favorable for disease development. Use a rotation program of different broad-spectrum fungicides for subsequent applications. Do not use Lucento fungicide back to back or more than twice in a seasonal spray program for cercospora leaf spot.



Lucento fungicide 5.5 oz. + Topsin fungicide 10 oz. (A) fb Koverall fungicide 2 lbs. + Topguard fungicide 14 oz. (B) fb Koverall fungicide 2 lbs. (C) fb Koverall fungicide 2 lbs. + Super Tin fungicide (D)



Untreated

Super Tin fungicide and Minerva Duo fungicide are Restricted Use Pesticides. Always read and follow all label directions, precautions and restrictions for use. Some products may not be registered for sale or use in all states. Lucento® fungicide may not be registered for sale or use in all states. Contact your local FMC representative or retailer for details and availability in your state. FMC, the FMC logo, Koverall, Lucento and Topguard are trademarks of FMC Corporation or an affiliate. Super Tin is a trademark of United Phosphorous Inc. Topsin is a trademark of Nippon Soda Company, Ltd. PROLINE is a registered trademark of Bayer. Minerva is a trademark of Sipcam Agro USA, Inc. ©2019 FMC Corporation. All rights reserved. 18-FMC-2476 02/19

LUCENTO
FUNGICIDE

FMC | An Agricultural Sciences Company