

ELEVEST® INSECT CONTROL WITH RYNAXYPYR® ACTIVE AND BIFENTHRIN AT-PLANT LABEL EXPANSION FOR SEEDLING PESTS OF BOTH FIELD AND SWEET CORN

Seedling insect pests of corn cause stand loss and reduce plant vigor, ultimately leading to reduced yield. Scouting for these pests may be minimal early in the season and often go unnoticed until it is too late. These pests are usually out of eyesight, down in the soil feeding on the emerging seedlings. The most effective approach to managing seedling insect pests is at planting through seed treatments or at-plant insecticide treatments, since rescue treatments only stop further damage. Elevest® insect control with Rynaxypyr® active plus bifenthrin has a new **expanded label offering new methods for At-Plant soil application (in-furrow spray, surface banding or broadcast over the soil surface) and an expanded rate range.** Elevest insect control complements seed treatments with an increased spectrum of insects controlled and broadens the zone of protection around developing seedlings.

Application Method ¹	Rate ²	Target Pest(s)	PHI
SOIL (in-furrow spray, surface band or broadcast over the soil surface)	At-Plant use: 7-14.1 fl. oz./acre	Cutworm species Army cutworm Black cutworm Clay-backed cutworm Dingy cutworm Sandhills cutworm Southern armyworm Sugarcane beetle True armyworm Yellow-striped armyworm	30 days (field, pop, field corn grown for seed)
SOIL (in-furrow spray)	At-Plant use: 9.6-14.1 fl. oz./acre	Asiatic garden beetle Billbug Corn rootworm larvae (Northern, Southern, and Western) Fall armyworm Grape colaspis Grubs Root aphids Seed corn maggot Wireworm	1 day (sweet, sweet corn grown for seed)

¹More information on SOIL APPLICATION methods may be obtained from the Elevest insect control label (page 10).

²See Rate Conversion Chart in the Application section of the Elevest insect control label (page 11) for calculation of rate applications per 1000 linear feet.

Inside this Issue

- ✓ Label Expansion for Elevest® Insect Control At-Plant Options
- ✓ At-Plant Elevest Insect Control Guidelines

Contact Your Local Representative

Field Sales Representatives

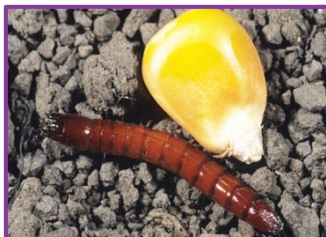
Michael Cunnane
Southwest VA, Western NC/SC
90 1-201-1657
michael.cunnane@fmc.com

Jake Flowers
Northeast NC, Southeast VA
252-269-6059
jake.flowers@fmc.com

Allie Skinner
Southeast NC, Northeast SC
252-343-9965
allie.skinner@fmc.com

Madison Lane
East GA, Southern SC
678-936-9942
madison.lane@fmc.com

Nicole Castellari
DelMarVa, North. Neck VA
609-805-1551
nicole.castellari@fmc.com



Wireworm
Larval Stage

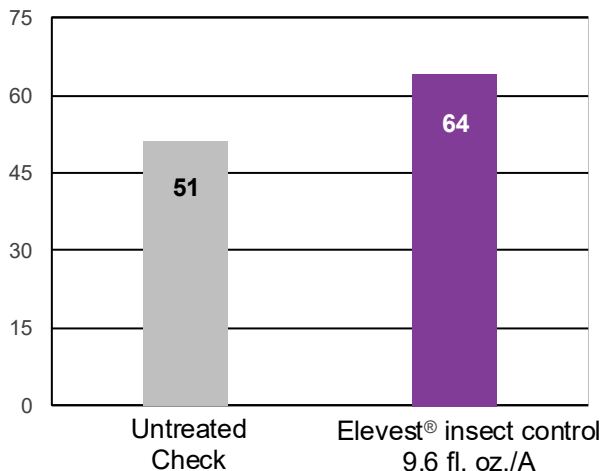


Click Beetle
(Adult Stage Wireworm)

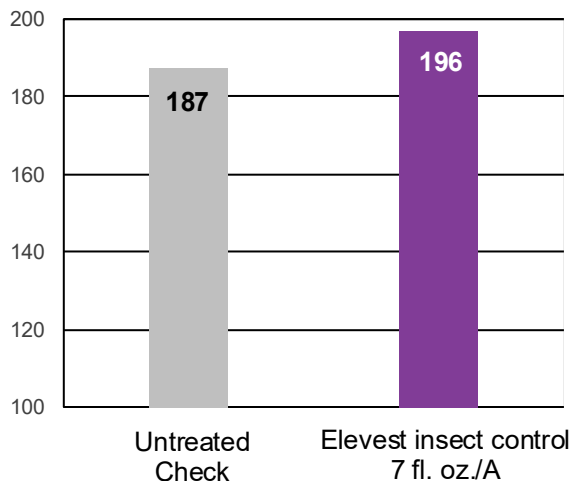


Wireworm Larvae
Damaged Plant

FIELD CORN YIELD (bushel/acre) 2024 Jackson, North Carolina (severe drought) *At-Plant In-Furrow Spray



FIELD CORN YIELD (bushel/acre) 2025 Rich Square, North Carolina *At-Plant In-Furrow Spray



ELEVEST INSECT CONTROL* PRODUCT COMPONENT RATE CONVERSION CHART

Elevest insect control (fl. oz./A)	Brigade® 2EC insecticide/miticide (fl. oz./A)	Capture® LFR® insecticide (fl. oz./A)	Coragen® eVo insect Control (fl. oz./A)
7.0	4.7	6.2	1.2
9.6	6.4	8.5	1.7
11.5	7.6 ¹	10.2	2.0
14.1	9.4 ¹	12.5	2.5

*Elevest insect control SOIL at-plant label rates: 7.0 fl. oz./A to 14.1 fl. oz./A. See rate conversion chart on p. 11 of label for application rates per 1000 linear feet for chosen row spacing.

¹For rate comparison only. The Brigade 2EC insecticide/miticide maximum label rate is 6.4 fl. oz./A.



White Grub Larval Stage



White Grub Adult Beetle



White Grub Damage



Bill bug Damage Larval Stage



Bill Bug Larval Feeding in Apical Whorl

The EPA labels for Brigade® 2EC insecticide/miticide, Capture® LFR® insecticide and Elevest® insect control contain the following statements: This product is highly toxic to bees exposed to direct treatment on blooming crops or weeds. Do not apply this product or allow it to drift to blooming crops or weeds if bees are foraging the treatment area. Protect pollinating insects by following label directions intended to minimize drift and to reduce risk to these organisms.

Brigade 2EC insecticide/miticide, Capture LFR insecticide and Elevest insect control are Restricted Use Pesticides. Always read and follow all label directions, precautions and restrictions for use. Some products may not be registered for sale or use in all states. FMC, the FMC logo, Brigade, Capture, Coragen, Elevest, and LFR are trademarks of FMC Corporation or an affiliate. ©2026 FMC Corporation. All rights reserved. 26-FMC-0034_177 01/26