

Anthem[®] MAXX Herbicide



CORN - GREAT PLAINS

Tank Mix to the Max.

Maximizing your corn yields starts with control in your fields, and that begins with your tank mix. Anthem[®] MAXX herbicide offers strong residual control that is 2 to 4 weeks longer when compared to other Group 15 herbicides. Effective control of ALS-, triazine- and glyphosate-resistant weeds like waterhemp and Palmer amaranth can be achieved with Anthem MAXX herbicide. Tough grasses such as foxtails, crabgrass and fall panicum also can't keep up.

Anthem MAXX herbicide also allows for application flexibility, two modes of action for herbicide-resistance management and has a dramatically lower use rate than many competitors. Labeled for all types of corn, it comes in an easy-to-handle formulation that's effectively tank mixed with burndown, preplant and preemergence herbicides, glyphosate, post herbicides and liquid fertilizers to create a customized weed management program for every corn acre.

For help maximizing flexibility and yields, choose Anthem MAXX herbicide.



QUICK FACTS:

- Labeled for field, seed, silage, pop and sweet corn.
- Preplant, preemergence and early postemergence application options.
- Low use rate: 2.0 – 6.5 fl. oz./A.
- Controls and suppresses key broadleaf weeds and grasses.
- Highly effective residual control of weeds with resistance to glyphosate, triazines and ALS-inhibiting products.

Label:

Active Ingredient: Pyroxasulfone, fluthiacet-methyl, Group 14 & 15 herbicides.

Preharvest Intervals:

Field, seed, silage, popcorn: 30 days forage; 70 days grain/stover
Sweet corn: 40 days forage, ears.

Restrictions:

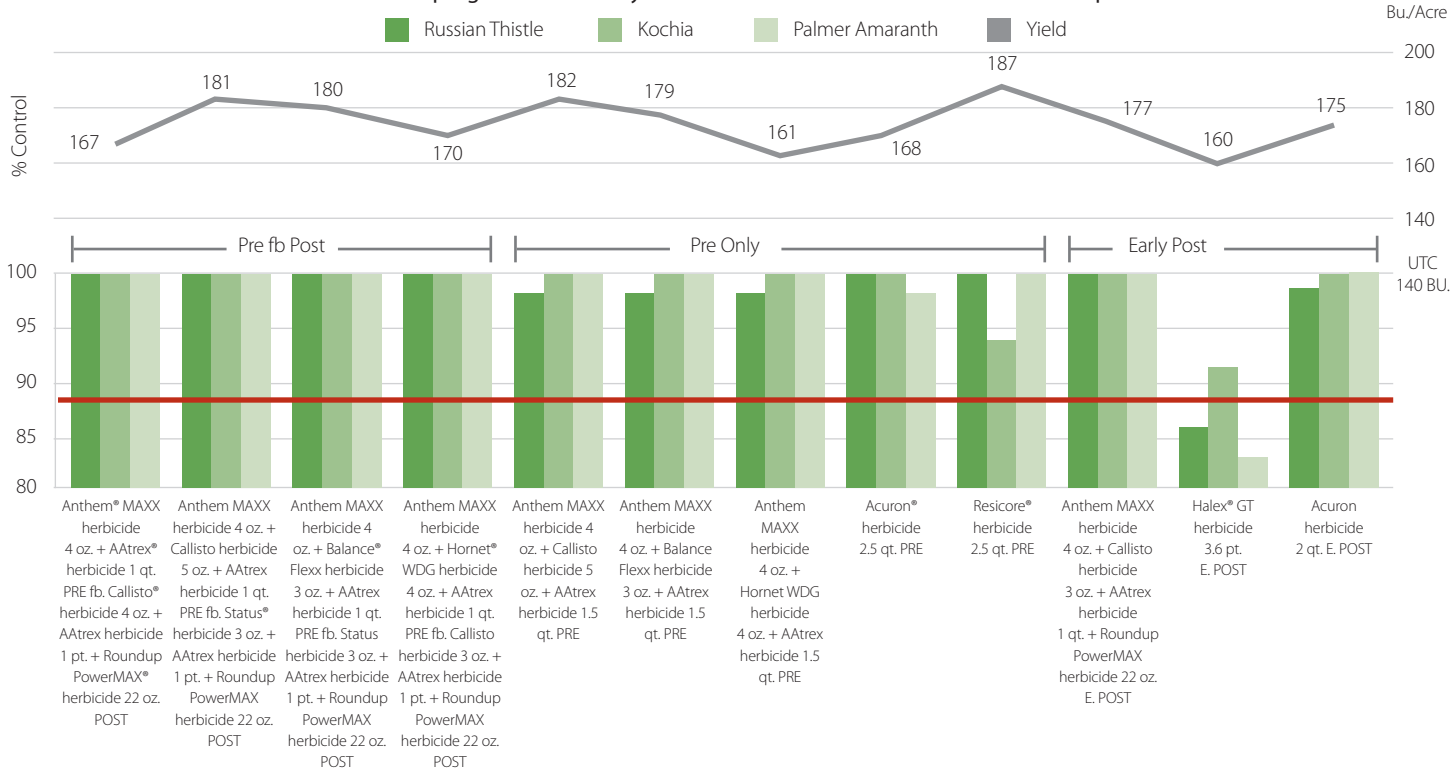
Do not apply more than 0.0089 lb. ai/A of fluthiacet methyl or 0.266 lb. ai/A of pyroxasulfone per acre per year including preplant burndown.

Please see product label for a complete list of restrictions.

Anthem® MAXX Herbicide Programs in Corn

Currie - Kansas State University - Garden City, Kansas 2018

Anthem MAXX herbicide programs control key west Kansas weeds as well or better than competitive standards.



Targeted Weeds:

- | | |
|--------------------------|-----------------|
| Annual grasses | Morningglory |
| Eastern black nightshade | Palmer amaranth |
| Giant foxtail | Pigweed |
| Kochia | Velvetleaf |
| Lambsquarters | Waterhemp |

Great Plains Application Recommendations:

Preplant & PRE Broad-Spectrum Program

Early preplant through preemergence applications

- 4 oz./A Anthem MAXX herbicide
- 1.5 – 2.0 lbs./A atrazine herbicide
- 6.0 fl. oz./A mesotrione 4 SC herbicide
- + labeled rate of glyphosate herbicide

- OR -

Post Broad-Spectrum Program

Early postemergence through V4 applications:

- 4 oz./A Anthem MAXX herbicide
- 1.0-1.5 lbs./A atrazine herbicide
- 3.0 fl. oz./A mesotrione 4 SC herbicide OR
- 0.25 - 0.5 lb./A ae dicamba herbicide
- + labeled rate of glyphosate herbicide

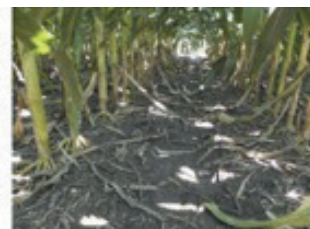
Application rates may vary among similar active ingredient products. Always read and follow all labeled rates.

Palmer Amaranth Control in Corn - 2017

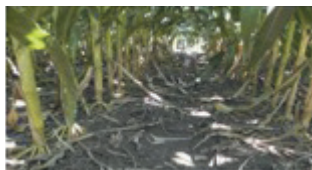
University of NE - Lincoln, South Central Ag Lab - Clay Center, NE



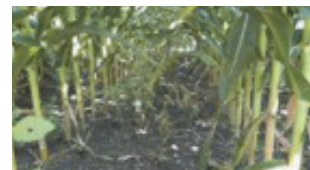
Untreated Check



Anthem MAXX herbicide 4 oz. + atrazine herbicide 1 qt. + Callisto herbicide 5 oz.
Applied PRE - 5/12
Photo 8/24 (103 DAT)



Anthem MAXX herbicide 4 oz. + atrazine herbicide 1 qt. + Callisto herbicide 5 oz. (PRE)



Acuron herbicide 2.5 qt. (PRE)

To learn more about Anthem MAXX herbicide, contact your local FMC retailer or visit Ag.FMC.com.

Atrazine, AAtrex, Balance Flex and Acuron herbicides are Restricted Use Pesticides. Always read and follow all label directions, precautions and restrictions for use. Some products may not be registered for sale or use in all states. FMC, the FMC logo and Anthem are trademarks of FMC Corporation or an affiliate. AAtrex, Acuron, Callisto and Hallex are trademarks of Syngenta Group Company. Status is a trademark of BASF. Balance is a trademark of Bayer. Resicore is a trademark of Dow. Hornet is a trademark of Corteva Agriscience. Roundup PowerMAX is a trademark of Bayer CropScience. ©2023 FMC Corporation. All rights reserved. 23-FMC-1504 08/23

