

# Mustang® Maxx Insecticide



## ALFALFA

### Choose longer lived alfalfa stands with Mustang® Maxx insecticide

Mustang® Maxx insecticide brings the pyrethroid difference to your alfalfa crop, fighting yield-robbing infestations of weevils, cutworms, leafhoppers and others before they take hold in your fields. Treating insect complexes early with Mustang Maxx insecticide will give you the grower's edge during key growth windows for yield gains and significant forage quality improvements.

The enhanced pyrethroid chemistry of Mustang Maxx insecticide works on contact and ingestion, and may be applied before, during or after planting. It also makes a great tank-mix partner with other products approved for use on alfalfa. Plus, you'll get the flexibility of short preharvest and re-entry intervals.

For longer lived alfalfa stands and the bottom-line benefit of increased dollars-per-acre return on your investment, choose Mustang Maxx insecticide.

#### Quick Facts

- Enhanced pyrethroid chemistry works on contact with residual control of many pests.
- For At-Plant, pre- or post-emergence application.
- Short three-day preharvest interval for cutting or grazing.
- Proven, broad-spectrum insecticide for higher yields.
- Controls widest range of insects.
- May be applied by both ground and air.
- Can be tank mixed with other labeled insecticides, fungicides or herbicides.



## Recommended Use:

**Use rate:** 2.24-4.0 fl. oz./A

**Active Ingredient:** Zeta-cypermethrin

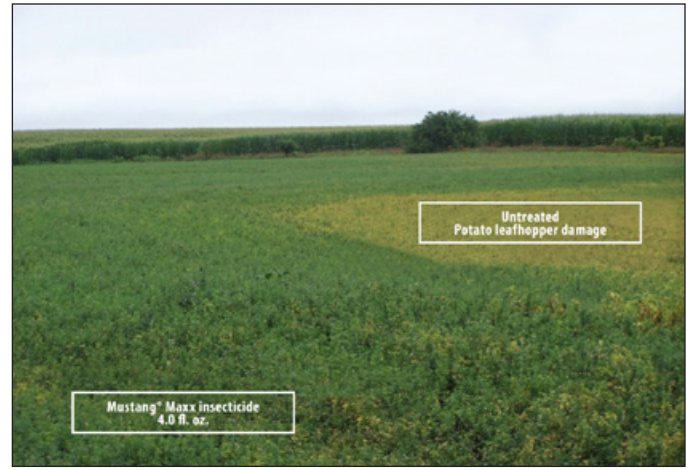
**Chemistry Class:** Pyrethroid, IRAC Group 3A

**Formulation:** 0.8 lb. ai/gal.

**Signal Word:** WARNING

**REI:** 12 hours

**PHI:** 3 days (cutting or grazing), 7 days (harvesting seed)



Field trial in Higginsville, MO. Photo taken 6/29/07.

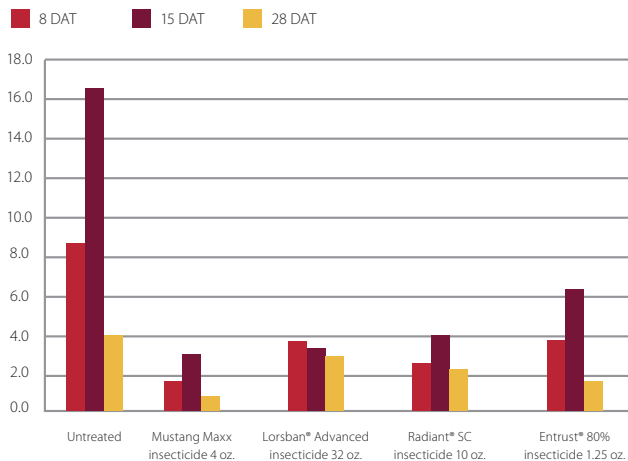
## Restrictions:

Apply a minimum of 2 GPA finished spray by air or 10 GPA finished spray by ground. ULV oil is prohibited.

A maximum of 8 fl. oz./A (0.05 lb. ai/A) may be applied per cutting with a maximum of 24 oz./A (0.15 lb. ai/A) per year.

### Egyptian Alfalfa Weevil Per Sweep

U.C. Davis 2013



INSECTS CONTROLLED*	PRODUCT RATE (FL. OZ./A)
Alfalfa Caterpillar Alfalfa Looper Alfalfa Weevil Blue Alfalfa Aphid Cutworms Egyptian Alfalfa Weevil Flea Beetles Green Cloverworm Green Peach Aphid Hornworms Meadow Spittlebug Pea Aphid Potato Leafhopper Spotted Alfalfa Aphid Three-Cornered Alfalfa Hopper Velvetbean Caterpillar Webworms	2.24 - 4.0
Armyworms Grasshoppers Plant Bugs Stink Bugs	2.8 - 4.0
<b>Restrictions:</b> Apply in a minimum of 2 GPA by air or 10 GPA by ground. ULV oil is prohibited.	

\*Aphid control may be variable depending on species present and host-plant relationships.

**For more information about Mustang Maxx insecticide, contact your FMC retailer or visit [Ag.FMC.com](http://Ag.FMC.com).**

**Mustang Maxx insecticide and Lorsban Advanced insecticide are Restricted Use Pesticides.** Always read and follow label directions, precautions and restrictions for use. Some products may not be registered for sale or use in all states. FMC, the FMC logo and Mustang are trademarks of FMC Corporation or an affiliate. Lorsban, Radiant and Entrust are trademarks of Corteva Agriscience LLC. ©2023 FMC Corporation. All rights reserved. 23-FMC-1504 08/23

