

ZEUS® XC HERBICIDE

BROAD-SPECTRUM RESIDUAL WEED CONTROL

ZEUS® XC HERBICIDE BENEFITS

- Excellent crop safety with tank-mix flexibility.
- Added burndown power to control emerged weeds.
- Excellent control of difficult-to-control weeds like pigweed, morningglories and nutsedge.
- Great application flexibility: Fall and spring dormant applications as well as in-season use with a shielded sprayer.
- Short preharvest interval of three days.

APPLICATION GUIDELINES

- Utilize a boom and nozzle sprayer equipped with the appropriate nozzles, spray tips and screens.
- Use nozzles that provide the largest droplet possible while providing thorough coverage of existing vegetation. Avoid nozzles that produce fine droplets. Avoid contact with desirable vegetation.
- Apply in a minimum of 10 gallons of finished spray per acre by ground.
- Adequate moisture of at least 0.5 inch is required within 14 days of application for optimal control.

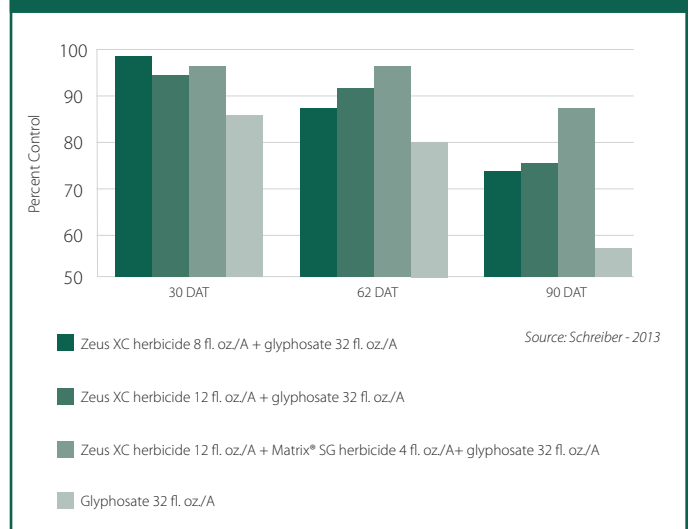
RESTRICTIONS

- Use ground equipment only. Do not apply Zeus® XC herbicide using airblast sprayers or by air. Do not apply using a mechanically pressurized handgun.
- Do not apply more than 12 fl. oz. of product per acre per 12-month period.
- Apply to crops that have been growing for at least three years and are in good condition.
- Do not apply to soils classified as sand with <1% organic matter.
- Avoid direct or indirect contact to desirable crop foliage and green bark.
- Banded applications must be a minimum of 60 days apart.

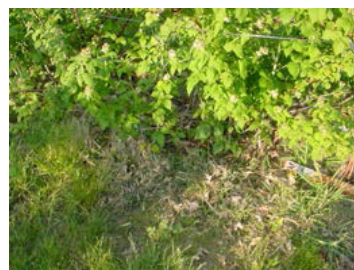
TECHNICAL INFORMATION

| | |
|-------------------|--|
| Active Ingredient | Sulfentrazone |
| IRAC Class & MOA | Group 14 – Aryl-triazolinone. Protoporphyrinogen Oxidase (PPO) Inhibitor |
| Formulation | 4.0 lbs. ai/gallon |
| REI | 12 hours |
| PHI | Three days |
| PPE | Applicators and other handlers must use protective eyewear, long-sleeved shirt and long pants, chemical resistant gloves and shoes plus socks. |

PERCENT WEED CONTROL



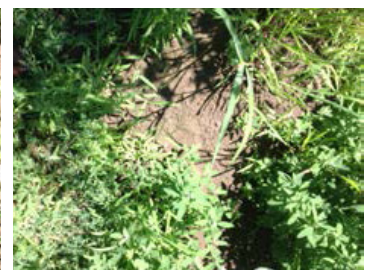
47 DAT



Zeus XC herbicide 8 fl. oz/A + Aim® EC herbicide 1.6 fl. oz/A + Matrix SG herbicide 1 fl. oz/A + Poast® herbicide 16 fl. oz/A + COC 1% v/v

Untreated Check

60 DAT



Zeus XC herbicide 12 fl. oz/A + glyphosate 32 fl. oz/A

Untreated Check