

Prevathon® Insect Control

Powered by Rynaxypyr® active

Technical Information Update: Worm identification and control in soybeans

Key pests and impact on soybeans

Soybeans, especially in the South, can be subject to economic damage from a number of lepidopteran worm pests, such as:

- Corn earworm (CEW)
- Soybean looper (SL)
- Velvetbean caterpillar (VBC)
- Beet armyworm (BAW)
- Fall armyworm (FAW)
- Green cloverworm (GCW)
- Cabbage looper (CL)
- Southern armyworm (SAW)

For optimum control, apply Prevathon® insect control powered by Rynaxypyr® active before larvae exceed economic thresholds and follow all label directions. Your local or state extension office can provide economic thresholds.



SOYBEANS

Corn earworm (CEW)



CEW adult

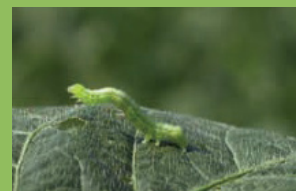


CEW larva

Soybean looper (SL)



SL adult



SL larva

Velvetbean caterpillar (VBC)



VBC adult¹



VBC larva

Beet armyworm (BAW)



BAW adult²



BAW larva

Apply Prevathon insect control at first sign of significant larvae in or adjacent to field edges, or before the economic threshold is exceeded.

Distinguishing armyworms and earworms

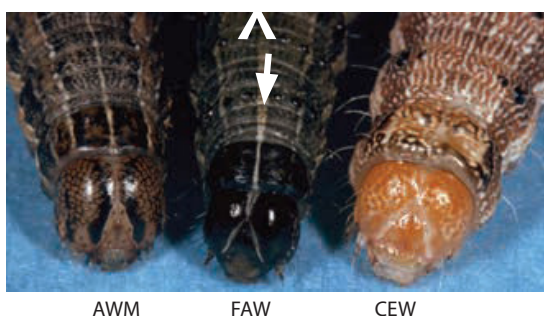
True armyworm (AWM) — Look for a smooth cuticle and subdued colors. Note that Prevathon® insect control is not labeled for true armyworms.

Fall armyworm (FAW)

- Brown/gray larva have distinct tubercles along body.
- Look for three thin, white stripes on its back and a distinct white inverted "Y" on head. See image below.
- Young larvae may be difficult to distinguish from corn earworm (CEW).

Corn earworm (CEW)

- Look for bright, variable colors.
- Cuticle has "unshaven" look.



Credits

¹ John C. French Sr., Retired, Universities: Auburn, GA, Clemson and U of MO, Bugwood.org.

² Merle Shepard, Gerald R. Carner, and P.A.C Ooi, Insects and their Natural Enemies Associated with Vegetables and Soybean in Southeast Asia, Bugwood.org.

³ Joseph Berger, Bugwood.org.

⁴ Whitney Cranshaw, Bugwood.org.

⁵ Eddie McGriff, University of Georgia, Bugwood.org All images credited above are used under a "Creative Commons Attribution 3.0 License," which can be viewed at <http://creativecommons.org/licenses/by/3.0/us/>.

Fall armyworm (FAW)



FAW adult



FAW larva

Green cloverworm (GCW)



GCW adult



GCW larva

Cabbage looper (CL)

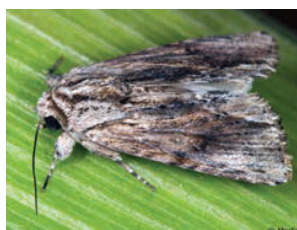


CL adult³



CL larva⁴

Southern armyworm (SAW)



SAW adult



SAW larva⁵

Apply Prevathon insect control at first sign of significant larvae in or adjacent to field edges, or before the economic threshold is exceeded.

For more information, contact your local FMC retailer or representative about Prevathon insect control and visit us at FMCCrop.com.

Always read and follow all label directions, restrictions and precautions for use. Some products may not be registered for sale or use in all states. As of November 1, 2017, the USEPA registrations for DuPont™ Prevathon® insect control and Rynaxypyr® active were sold to FMC by DuPont. FMC, Prevathon and Rynaxypyr are trademarks of FMC Corporation or an affiliate. ©2018 FMC Corporation. All rights reserved. 18-FMC-1836 08/18