

# THE RIGHT INSECT CONTROL, RIGHT WHEN YOU NEED IT



Targeted aphid and lygus bug control in pulses and alfalfa



Innovative, selective insect control you can count on



Reliable wheat midge, aphid, lygus and spider mite control



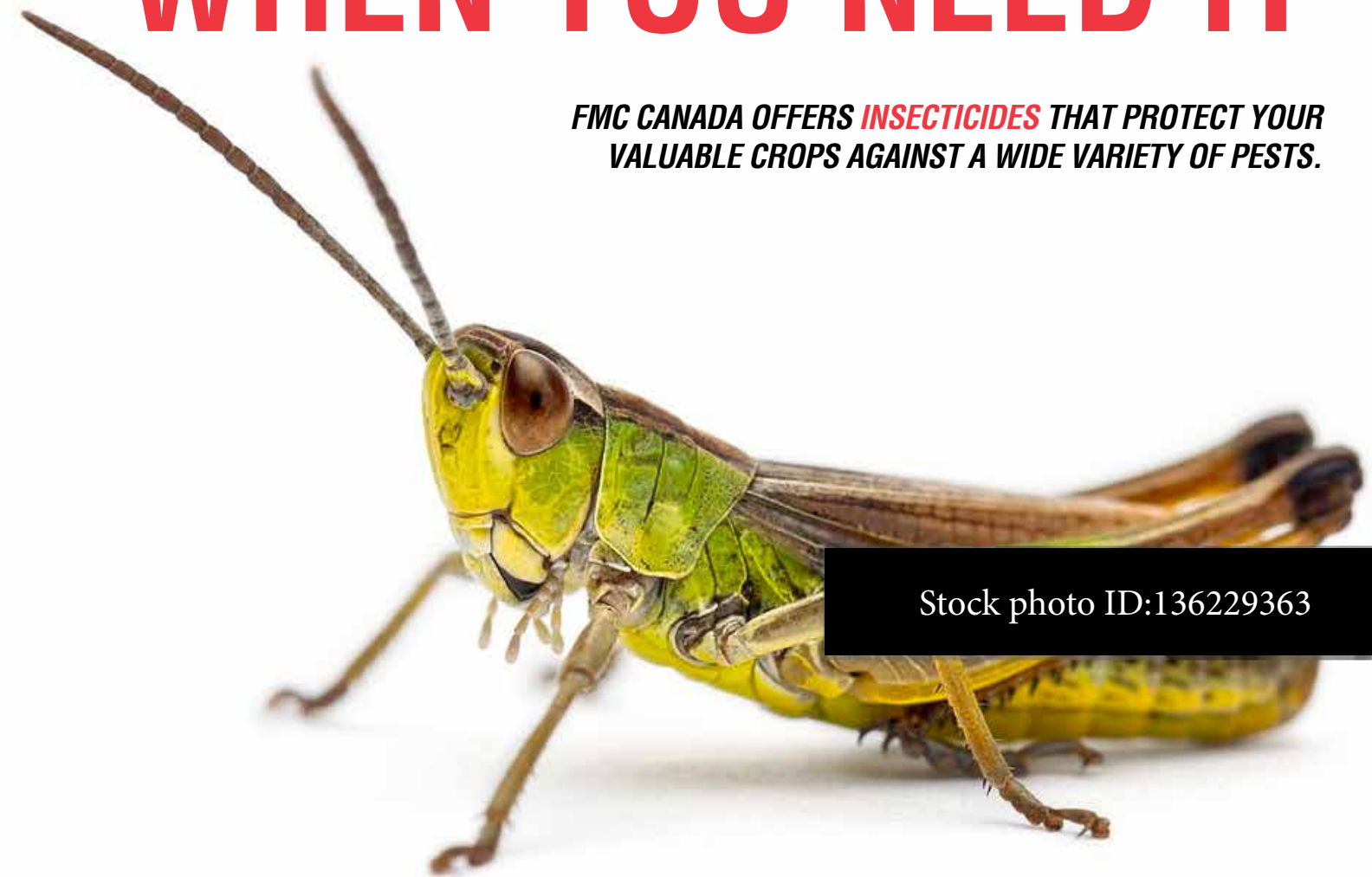
Effective control of striped and crucifer flea beetles as well as cutworms

*Questions? Ask your retailer how FMC insect control products can protect the yield and quality of your crops.*

    @FMCaCanada  
ag.FMC.com/ca | 1-833-362-7722

# THE RIGHT INSECT CONTROL, RIGHT WHEN YOU NEED IT

FMC CANADA OFFERS **INSECTICIDES** THAT PROTECT YOUR VALUABLE CROPS AGAINST A WIDE VARIETY OF PESTS.



Stock photo ID:136229363

# DEFEND YOUR CROPS AND PROFITS WITH **PROVEN, POWERFUL** INSECT CONTROL



Highly concentrated for easier handling and increased sustainability

Powered by Rynaxypyr®, a Group 28, Coragen® MaX insecticide provides broad-spectrum, extended control<sup>1</sup>. Coragen® MaX insecticide has minimal impact on many important beneficial insects and pollinators<sup>2</sup>, and its unique environmental and toxicological profile make it a sound choice for growers and applicators.

- Oilseeds:** canola, mustard, flax, sunflower and more
- Cereals:** wheat, barley, rye, oats, triticale, buckwheat, millet and more
- Legumes:** chickpeas, faba beans, lentils, field peas, soybean, dry beans and more
- Other:** corn, potatoes, alfalfa, forage, hay

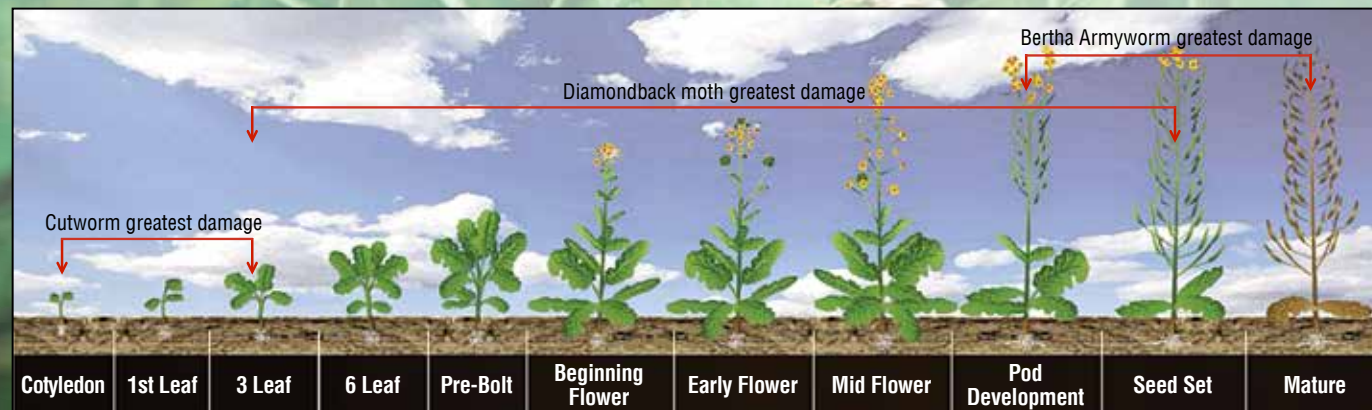
## Registered Rates & Insects Controlled

Insect	Coragen® MaX Insecticide Rates Acres / 2L Jug
Alfalfa weevils*	30 - 40
Armyworm in cereals	40 - 60
Banded sunflower moths	40 - 60
Beet armyworms	40 - 60
<b>Bertha armyworms</b>	<b>40 - 120</b>
Cabbage loopers	60
Colorado potato beetles	30 - 60
Corn earworms	40 - 60
<b>Cutworms</b>	<b>60</b>
<b>Diamondback moths</b>	<b>120</b>
European corn borers	40 - 60
Fall armyworms	40 - 60
<b>Grasshoppers</b>	<b>60 - 120</b>
Imported cabbage worms	60
Sunflower head moths	40 - 60
Swede midge	60

\* suppression

See Product Guide for rate details.

When economic threshold reached



<sup>1</sup> Depending on rate and when weather and temperature are optimal.  
<sup>2</sup> In line with Integrated Pest Management and good agricultural practices, insecticide applications should be made when pollinators are not foraging to avoid unnecessary exposure.



Targeted aphid and lygus bug control in pulses and alfalfa

- Lentil, field pea, chickpea, dry bean, faba bean, lupin, alfalfa (seed and forage), clover (Not soybean)
- Aphids, lygus\* and tarnished plant bug\*
- Aphids:** 49-65 g/ac (Recommended rate 25 acres per 1.587 KG jug)  
**Lygus and tarnished plant bug:** 81 g/ac (Recommended rate 20 acres per 1.587 KG jug)
- When economic threshold reached

\*Reduces the numbers of lygus bugs including tarnished plant bug.



High performing insecticide for control of striped and crucifer flea beetles as well as cutworms

Pounce® 384EC insecticide is a reliable solution for control of **striped and crucifer flea beetles** in canola as well as cutworms in a wide variety of crops.

- Canola, cereals (wheat, oats, barley), corn, lentils, peas, flax, potatoes\*, sunflowers and sweet corn
- Flea beetles (striped and crucifer) and cutworms
- Flea beetles:** 62 ml/acre (160 acres per 10L jug)  
**Cutworm:** 125 ml/acre (80 acres per 10L jug)
- When economic threshold reached

\*See label for pests and rates.



Reliable wheat midge, aphid, lygus and spider mite control

Cygon® 480-AG insecticide delivers control of **wheat midge, lygus bug, spider mites and aphids** in key western crops.

- Aphids, spider mites, wheat midge, tarnished plant bugs (lygus bugs) and other problem pests
- Wheat, barley, oats, soybeans, canola, and more  
See label for complete crop list.
- Aphids:** 111 - 405 ml/ac\* (25 - 90 acres per 10L jug)  
**Spider mites:** 405 ml/ac\* (25 acres per 10L jug)  
**Wheat midge:** 405 ml/ac\* (25 acres per 10L jug)  
**Tarnished plant bugs (lygus bugs):** 172 - 445 ml/ac\* (22 - 58 acres per 10L jug)
- \*Refer to FMC product guide or product label for more detailed crop and rate information.

When economic threshold reached