



# 2022 APPLICATION RECOMMENDATION

## INSIDE-OUT FOLIAR DISEASE PROTECTION

Utilizing the innovative and unique characteristics of the triazole fungicide, flutriafol, Xyway™ brand fungicides possess a high level of systemic mobility and residual. This novel technology allows growers to make their fungicide application with the planter pass and achieve season-long foliar disease protection of key yield-limiting corn diseases.

## FIELD EXPERIENCE

In 2021, FMC launched Xyway LFR® fungicide with high grower interest and excellent success in corn-growing regions of the United States. In many cases, high levels of disease protection and yield increases were consistent with years of internal and external research by FMC. In some circumstances and fields, growers did observe an undesirable crop response when the application was applied directly on the seed.

Slow GDD accumulation, cool soils, different hybrid response and application systems resulted in variable uptake of the active ingredient, resulting in emergence delays and occasional stand loss.

## APPLICATION RECOMMENDATION UPDATES FOR 2022

Xyway 3D fungicide recommendations remain unchanged. The 3RIVE 3D® application system, 3D product formulation and application consistency and performance will continue to be supported by FMC.

**FMC recommends applying Xyway LFR fungicide away from direct contact with the seed i.e., between 0.5-4" off the seed.**

Laboratory, greenhouse and field research confirms as long as product is not placed in direct contact with the seed, excellent crop safety is achieved. Disease performance and yield protection is maintained and benefits of Xyway LFR fungicide and fertilizer combinations can be applied without risks of affecting corn emergence and stand establishment.

## EXAMPLES OF XYWAY™ LFR® FUNGICIDE APPLICATION METHODS

This is not a complete list of acceptable application methods.\*\*



2x2, 2x2x2



Surface Dribble



Furrow Jet



Furrow Forced Dual



G2 Fertilizer Disc



360 Bandit/Wave

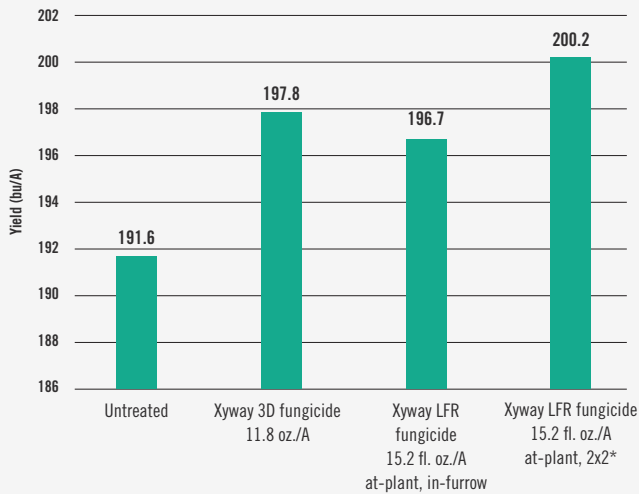


Fast Trac

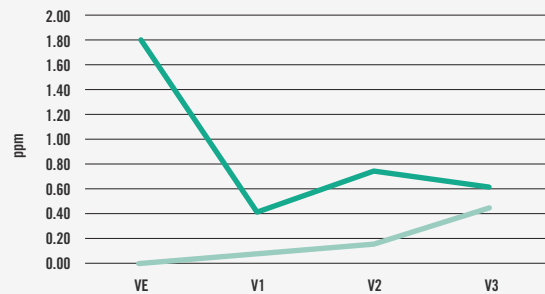


Y-Drop

### YIELD RESPONSE TO XYWAY BRAND FUNGICIDES APPLICATION PLACEMENT 2019-2021



### XYWAY LFR FUNGICIDE CONCENTRATION BY CORN GROWTH STAGES UNDER FIELD CONDITIONS COMPARISON OF IN-FURROW VS 2X2\* APPLICATIONS



**In-furrow application**  
High variability in detection at VE ranging from 0.29 to 4.15 ppm.

**2x2\* application**  
- No detection in plants at VE.  
- Only five of 10 sampled plants had detectable levels of flutriafol at V1 with a range from 0.04 to 0.24 ppm  
- Flutriafol concentration tends to equalize between in-furrow and 2x2\* applications by V3 corn growth stage.

## BEST MANAGEMENT PRACTICES

Apply Xyway LFR fungicide in a manner that avoids direct contact with the seed. A minimum distance of 0.5" should be achieved to avoid potential crop response.

- **Application Volume:** Xyway LFR fungicide should be applied in a minimum of 5 GPA for subsurface applications. Higher volumes may be necessary for surface applications (i.e. Y-drop and surface stream). An inconsistent application could result in reduced disease efficacy or increased potential for crop response.
- **Agitation of Solution:** Xyway LFR fungicide should have adequate agitation in the tank to maintain a homogenous solution.

### N. HUSTEDDE - 2021: WHITESTOWN, IN



Untreated

Xyway LFR fungicide  
15.2 fl. oz./A at-plant, in-furrow

Xyway LFR fungicide  
15.2 fl. oz./A at-plant, 2x2\*

\*This Xyway LFR fungicide recommendation is made as permitted under FIFRA Section 2(ee) for alternative placement at-plant in corn (field, corn grown for seed, popcorn and sweet corn) in all registered states except Texas. This recommendation has not been submitted to or approved by the EPA. The 2(ee) expiration date is 12/31/2027.

\*\*Examples provided are not an endorsement of an individual brand or manufacturer. This is not an all-inclusive list of effective, alternative application options.